



**Abbott**

# ONE TEST, SINGLE SWAB, MULTIPLE RESULTS

## **BinaxNOW™ COVID-19/Flu A&B**

COVID-19 and influenza have similar symptoms, making accurate diagnosis difficult based on symptoms alone. Using one, patient-friendly nasal swab, BinaxNOW™ COVID-19/Flu A&B simultaneously tests for COVID-19, influenza A and influenza B, with results in 15 minutes.



### **EASY TO USE**

CLIA-waived test procedure using a nasal swab



### **RESULTS IN 15 MINUTES**

Visually read results, no instrument necessary.



### **PROVIDES THREE RESULTS**

Actionable insights for your patients at the point of care

# BinaxNOW™ COVID-19/FLU A&B

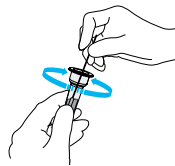
## EASY TEST PROCEDURE\*

Refer to complete Quick Reference Instructions before performing the test.

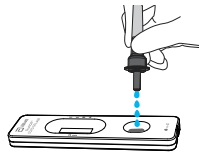
**SWAB:** Rotate swab against inside of nostril, making at least 5 circles; repeat in other nostril.



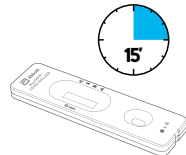
**STIR:** Completely immerse swab in buffer tube solution, then vigorously mix by rotating 10 times.



**ADD DROPS:** Attach the cap onto the tube, then squeeze only 4 drops into the sample well.



**WAIT:** Read test result after 15 minutes to see COVID-19 and flu results.



C = control (red line)  
 S = COVID-19 (SARS-CoV-2) (red line)  
 B = influenza B (blue line)  
 A = influenza A (red line)

If the control line at C is visible, and any other line or multiple lines on S, B and/or A appear, the test is positive for that virus.



## PERFORMANCE\*

	PPA	NPA
COVID-19 (SARS-CoV-2)	90.6%	99.4%
INFLUENZA A	89.7%	98.8%
INFLUENZA B	86.0%	99.7%

PPA = positive percent agreement  
 NPA = negative percent agreement

Direct nasal swabs taken within 4 days of symptom onset from individuals suspected of COVID-19, influenza A and /or influenza B.

## TEST KIT CONTENTS

- 25 test cassettes
- 25 sterile swabs
- 25 extraction buffer tubes and filter caps
- 1 Quick Reference Instructions

## ORDER INFORMATION

PRODUCT NAME	PRODUCT CODE
BinaxNOW™ COVID-19/Flu A&B Test Kit 25 CT	20002054
BinaxNOW™ COVID-19/Flu A&B Test Control Swab Kit 10 POSITIVE/10 NEGATIVE	20002055

FOR MORE INFORMATION, CONTACT YOUR LOCAL ABBOTT REPRESENTATIVE OR VISIT [GLOBALPOINTOF CARE.ABBOTT](https://www.globalpointofcare.abbott)



\*Refer to the product Instructions for Use or Quick Reference Instructions for detailed instructions and information on performance data.

© 2025 Abbott. All rights reserved. All trademarks referenced are trademarks of either the Abbott group of companies or their respective owners. Any photos displayed are for illustrative purposes only. Any person depicted in such photos is a model. RDx-24028125-01 01/25